



REAL ESTATE INVESTMENTS
UNDERWRITING MANAGER

ACQUISITION
BORROWERS

Investment Opportunities
CONSTRUCTION
SELF-DIRECTED INVESTMENTS

INSURANCE
DEVELOPMENT

LOAN
RESOLUTION

LOAN
ORIGINATION

TRUST
DEEDS



CM Group, LLC owns and manages CM Capital Services, LLC (“CMCS”) and a Broker/Dealer, CM Securities. CM Group also serves as Advisor for Desert Capital REIT, Inc. (“DCR”). CM Group provides and implements business strategy and oversees daily operations and performance of the companies, and collectively manages over \$450 million in assets.

The principals of CM Group have extensive knowledge in real estate acquisition and financing, investment strategies, financial management, investor relations, and corporate and securities legal expertise.

CM GROUP LEADERSHIP



TODD PARRIOTT,
MANAGER



STEVE DAWSON,
MANAGER

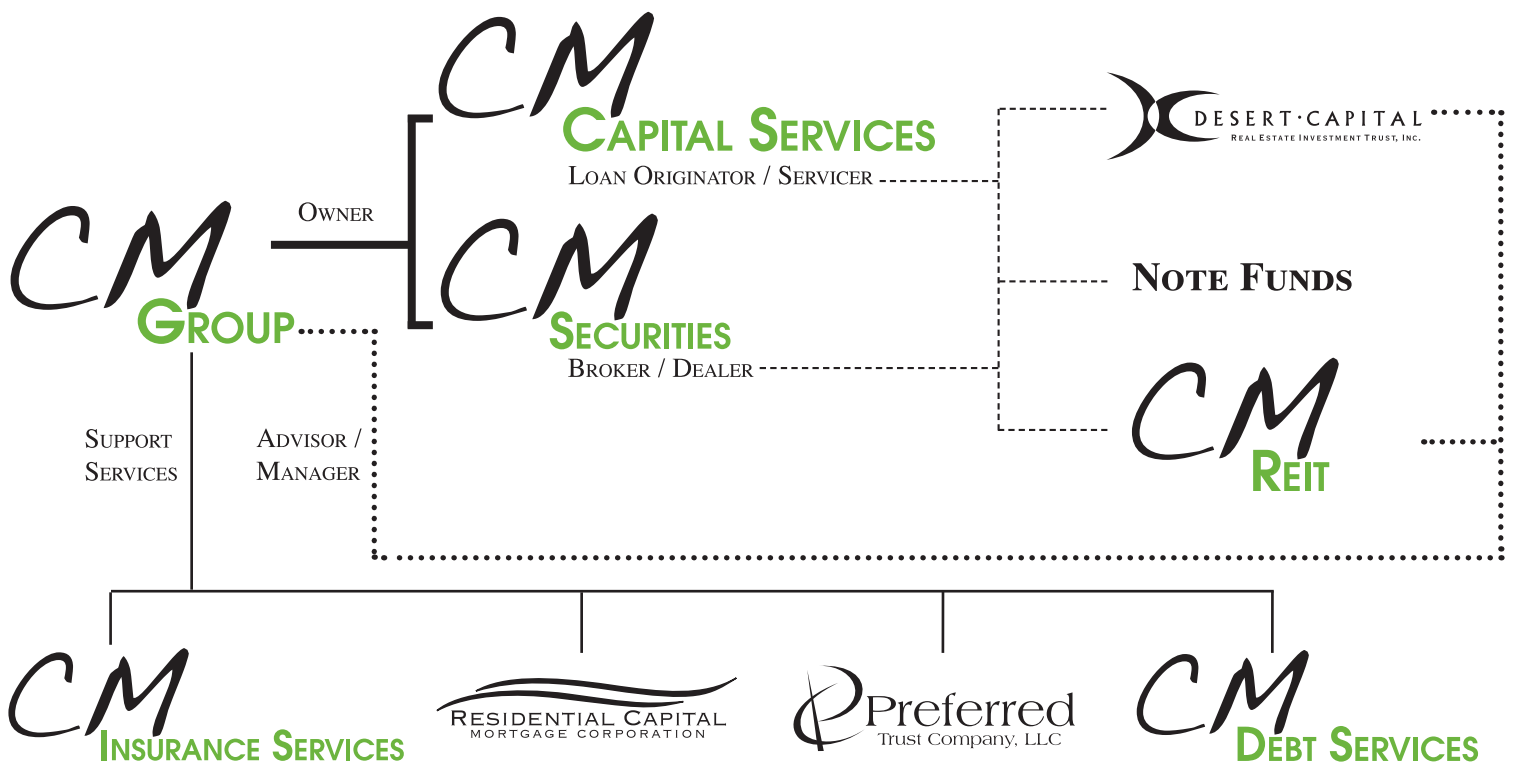


STACY RIFFE,
MANAGER



BRYAN GOOLSBY,
MANAGER

CM GROUP OF COMPANIES



INVESTMENT PRODUCTS

Trust Deeds **CM CAPITAL SERVICES**

CMCS is a private real estate investment company that has originated and serviced trust deed investments on behalf of clients since 1977. Investments consist of short-term acquisition, development, and construction loans. The company services over \$450 million in loans. CMCS provides a pipeline of real estate investment opportunities to meet the various investment requirements of DCR, CMCS, and privately offered funds.

Note Funds **DIRECT PARTICIPATION PROGRAM**

Privately offered Note Funds meet the needs of investors seeking current income and portfolio performance through investment in loans backed by tangible assets. The Note Funds intend to take advantage of current deeply discounted real estate values in the Las Vegas, Nevada area by making construction and development loans to homebuilders and developers whose financing needs are not being met by traditional lenders in today's limited credit market.

REITs **DESERT CAPITAL REIT**

DCR is a publicly registered, non-listed Real Estate Investment Trust formed by the principals of CMCS in July 2004. The company's primary business is to invest in short-term acquisition, development, and construction loans to homebuilders and developers. All loans are collateralized by real estate owned by the borrowers in connection with the mortgage financing.

CM REIT

By summer of 2010, CM Group will launch its second publicly offered, privately traded REIT to the broker/dealer community. Stay tuned for more information.

AFFILIATED COMPANIES

Capital Raising **BROKER/DEALER**

CM Group owns a broker/dealer registered with the Financial Industry Regulatory Authority, Inc. (“FINRA”) and the U.S. Securities and Exchange Commission (“SEC”). The Broker/Dealer provides investor services and supports the capital-raising efforts for DCR, a privately offered Equity Fund and a privately offered Notes Fund.

Debt Counseling **CM DEBT SERVICES**

CM Debt Services, LLC (“CMD”) provides clients an opportunity to put personal debt in perspective, while providing tactical ways to reduce and eliminate debt over time.

Home Mortgage **RESIDENTIAL CAPITAL MORTGAGE CORPORATION**

Residential Capital Mortgage Corporation (“RCMC”) is a Federal Housing Administration (FHA) and Veteran Affairs (VA) Lender. As a licensed Banker and Broker, RCMC strives to offer the widest variety of home loan options in the industry.

Custodian **PREFERRED TRUST COMPANY**

Preferred Trust Company, LLC (“PTC”) provides clients with the opportunity to self-direct their Individual Retirement Account (IRA) and to invest in a variety of investment vehicles, including non-publicly traded assets. By expanding its clients’ investment possibilities, PTC dispels the popular notion that bank CDs or the stock market are the only investment options for an IRA. In fact, many of PTC’s accountholders prefer to invest in non-traditional products, such as real estate.

Insurance **CM INSURANCE**

CM Insurance, LLC partners with a network of over 50 insurance companies throughout the country to analyze clients’ current and future insurance needs for home, auto, life, or long-term care.